



UNIVERSITY OF JAMMU

COLLEGES DEVELOPMENT COUNCIL

www.jammuuniversity.in

B.Ed. Admission Non-Govt. Colleges of Education

SESSION 2011-2012

Candidates who have/will obtain B.Ed. Degree from the University of Jammu are eligible for Employment in Central Govt. and other states as communicated by the NCTE (A statutory body of the Govt. of India) vide its circular No. 49/21/2005/NCTE(N&S) Dated May 31, 2007

TENTATIVE

COUNSELLING

SCHEDULE

OF B.ED.

ADMISSION

2011-2012

— LOCAL CATEGORY CANDIDATES : 21-07-2011

—NON-LOCAL CATEGORY CANDIDATES : 31-07-2011

APPLICATIONS FOR REFUND OF FEE SHALL BE ENTERTAINED UPTO ONE DAY PRIOR TO THE LAST DATE OF ADMISSION.

BATCH-WISE COUNSELLING SCHEDULE IN ORDER OF MERIT, IN THE QUALIFYING EXAMINATION SHALL BE NOTIFIED IN THE LEADING LOCAL & NATIONAL PAPERS & on University Website: <http://www.jammuuniversity.in>

CLASS WORK SHALL START FROM 23rd, SEPTEMBER, 2011

The University of Jammu established in 1969 has emerged as one of the leading Universities of India and has recently been reaccredited as 'A' grade by NAAC.

The University during the last 4 decades has shown accelerated growth in infrastructure and academics. With just 11 departments and 10 number of affiliated colleges in 1969, it has presently 35 leading departments and 166 affiliated colleges. University has its main campus in Jammu, besides it has established offsite campuses at Baderwah, Kathua, Udhampur, Ramban, Reasi, Poonch in its sole motto of providing higher education at the door steps in view of mountainous terrain of Jammu province.

Out of 166 colleges affiliated to the University there are 75 colleges of Education, one college is the Government College of education while other 74 are the non- Government Colleges of Education.

Of late, Jammu has emerged as a hub of teacher education in northern India since its colleges are catering to the needs of not only northern Indian states but to even far off states like Bihar, Jharkhand, MP, Maharashtra & Gujarat. The district wise Distribution of the Colleges of Education is as under:-

ZONE WISE DISTRIBUTION OF COLLEGES OF EDUCATION

| <u>ZONE</u> | <u>DISTRICT</u> | <u>NAME OF THE COLLEGE</u> | <u>YEAR OF ESTAB</u> |
|-------------|-----------------|--|----------------------|
| 1. | KATHUA | 1. Vivekananda College of Education, LakhanpurKathua. | 1995 |
| | | 2. Ashoka College of Education, National , Kathua | 2001 |
| | | 3. Guru Gang Dev Ji College of Educ. Chann Arrorian, Hiranagar, Kathua | 2001 |
| | | 4. New Age College of Education, Phinter (Billawar) Distt. Kathua | 2002 |
| | | 5. Ramisht College of Education, Basohli, (Kathua) | 2003 |
| | | 6. Baba Farid College of Education, Hatli Morh, Kathua | 2003 |
| | | 7. Thakur Dharma Singh College of Education, Kathua | 2003 |
| | | 8. Rajiv Gandhi Memorial College of Education, Kathua | 2003 |
| | | 9. Surya College of Education, Kathua | 2003 |
| | | 10. Bhagat Kabir College of Edu. Hatli Road. | 2004 |
| | | 11. Cosmic College of Education, Lakhanpur, Kathua | 2004 |
| | | 12. Lal Bhadur Shastri College of Education- | 2007 |
| | | 13. Bharat College of Education, Kathua | 2007 |
| | | 14. R.S. College of Education, Kathua | 2007 |
| | | 15. Satyam College of Education, Kathua | 2007 |
| | | 16. Guru Teg Bhadur College of Education. | 2008 |
| | | 17. Shri Shri Paramhansa Yogananda College of Education | 2008 |

| <u>ZONE</u> | <u>DISTRICT</u> | <u>NAME OF THE COLLEGE</u> | <u>YEAR OF ESTAB</u> |
|-------------|-----------------|--|----------------------|
| 2. | SAMBA 1. | Dogra College of Educ., Basi Kalan, Bari Brahmana Jammu | 1994 |
| | 2. | Adarsh College of Education, Tarore Bridge, N H, The. Samba, Jammu | 2000 |
| | 3. | Bhargava College of Education, Samba | 2001 |
| | 4. | CMH College of Education, Chowdhi Top, Sainik Colony, Jammu- | 2001 |
| | 5. | R.K. College of Education, Bari Brahmana Jammu | 2001 |
| | 6. | Vimal Muni College of Edu., Ramgarh, Jammu | 2003 |
| | 7. | Saraswati College of Education, Najwal, Jammu-Pathankot NH, Jammu | 2003 |
| | 8. | KC Minerva College of Education | 2004 |

| <u>ZONE</u> | <u>DISTRICT</u> | <u>NAME OF THE COLLEGE</u> | <u>YEAR OF ESTAB</u> |
|-------------|-----------------|--|----------------------|
| 3 | JAMMU 1 | MIER College of Education, B.C. Road, Jammu | 1981 |
| | 2. | M.C. Khalsa College of Education, Chand Nagar, Below Gumat, Jammu | 1989 |
| | 3. | NSM College of Education, Anand Nagar, Bohri, Jammu | 1994 |
| | 4. | Divya College of Education, Lower Gaddi Garh, Miran Sahib, Jammu | 1998 |
| | 5. | Chenab College of Education, Langer, Opp. S.B.I. Kaluchak, Jammu- | 1999 |
| | 6. | Luthra College of Education, Bohri, Talab Tillo, Jammu | 2000 |
| | 7. | K.C.S. College of Education for Women, Upper Paloura, Jammu | 2000 |
| | 8. | Trikuta College of Education, Nardni Raipur (Kot-Bhalwal Road) Jammu | 2000 |
| | 9. | New Millennium National College of Education, Tarore, Jammu | 2000 |
| | 10. | Sher-e-Kashmir College of Education, Ajit Nagar, Near Airport, Jammu | 2001 |
| | 11. | National College of Education, Purkhoo Camp, Domana, | 2001 |
| | 12. | Calliope College of Education, Jammu-Akhnoor Highway, Dommi, Jammu. | 2001 |
| | 13. | New Gandhi Memorial College of Education, Miran Sahib, Jammu | 2001 |
| | 14. | Atman College of Education, Greater Kailash, Kunwani Bye-Pass ,Jammu | 2001 |
| | 15. | Harvard College of Edu. Gadi Garh, Airport Road Jammu. | 2001 |
| | 16. | KC College of Education, Akhnoor Road, Jammu | 2001 |
| | 17. | Guru Nanak College of Education, Jallo Chack Kunjwani, Jammu | 2001 |
| | 18. | B.N. College of Education, Nawabad-Sunjwan, Jammu | 2002 |
| | 19. | Sai Shyam College of Education, Ghou-Manhasan Jammu, | 2002 |
| | 20. | Shirdee College of Edu,Mohamood Pur,Bishnah,jammu | 2003 |
| | 21. | Ranjit College of Education,Guru Arjun Dev Nagar,Kunjwani, jammu | 2003 |
| | 22. | Tagore College of Education,Akalpur,P.O. Talab Tillo, Jammu | 2003 |
| | 23. | Kawa College of Education,Patoli Gurha Brahmana, jammu | 2003 |
| | 24. | Hill People College of Education,Kot-Bhalwal, Jammu | 2003 |
| | 25. | Sacred Heart College of Education, Jammu | 2003 |
| | 26. | J.K. College of Education, Kunjwani, Jammu | 2003 |

| | | |
|-----|--|------|
| 27. | Sant Mela Singh College of Edu. Digiana, Jammu | 2003 |
| 28. | K.C. Gurukul College of Education, Jammu | 2003 |
| 29. | Jan College of Education, Kot-Bhalwal, Jammu | 2004 |
| 30. | Handa College of Edu.Sainik Colony, Jammu | 2004 |
| 31. | Taawish College of Education, Narwal, Jammu | 2004 |
| 32. | Galaxy College of Education, Sainik Colony, Jammu | 2004 |
| 33. | Beacon College of Education, Kot-Bhalwal. | 2004 |
| 34. | New Modern College of Education, Sainik colony | 2004 |
| 35. | Thakur Anant Singh College of Education, Sainik colony | 2007 |
| 36. | R.M. College of Education, Jammu | 2007 |

| <u>ZONE</u> | <u>DISTRICT</u> | <u>NAME OF THE COLLEGE</u> | <u>YEAR OF ESTAB</u> |
|-------------|-----------------|---|----------------------|
| 4 | UDHAMPUR | 1. Shivalik College of Education, Shiv Nagar, NH-1A, Udhampur | 1998 |
| | & | 2. Kalras College of Education, Hospital Road, Udhampur- | 2000 |
| | REASI | 3. Kalra College of Education, Poonch House, Kud | 2003 |
| | | 4. Bhartiya College of Education, Udhampur | 2003 |
| | | 5. Bhim Singh College of Education, Udhampur | 2009 |
| | | 6. Vaishno Devi College of Education, Reasi | 2002 |
| | | 7 Shastri Memorial College of Education, Reasi | 2003 |
| | | 8 Durga College of Education, Katra | 2004 |

| <u>ZONE</u> | <u>DISTRICT</u> | <u>NAME OF THE COLLEGE</u> | <u>YEAR OF ESTAB</u> |
|-------------|-----------------|--|----------------------|
| 5 | RAJOURI | 1. Tariq College of Education, Ward No.1, Near Salani Bridge, Rajouri | 2000 |
| | & | 2. Swami Vishwatamanand Saraswati College of Education, Sunderbani, Rajouri- | 2001 |
| | POONCH | 3. Himalayan College of Education, Rajouri. | 2003 |
| | | 4. Poonch College of Education, Poonch | 2003 |

| <u>ZONE</u> | <u>DISTRICT</u> | <u>NAME OF THE COLLEGE</u> | <u>YEAR OF ESTAB</u> |
|-------------|-----------------|---|----------------------|
| 6. | KISHTWAR | 1. Islamia Faridia College of Education, Kishtwar | 2001 |
| | DODA & | | |
| | RAMBAN | | |

The number of College of Education in Non-Government Sector has grown during the last 3 decades as depicted by the data given below:-

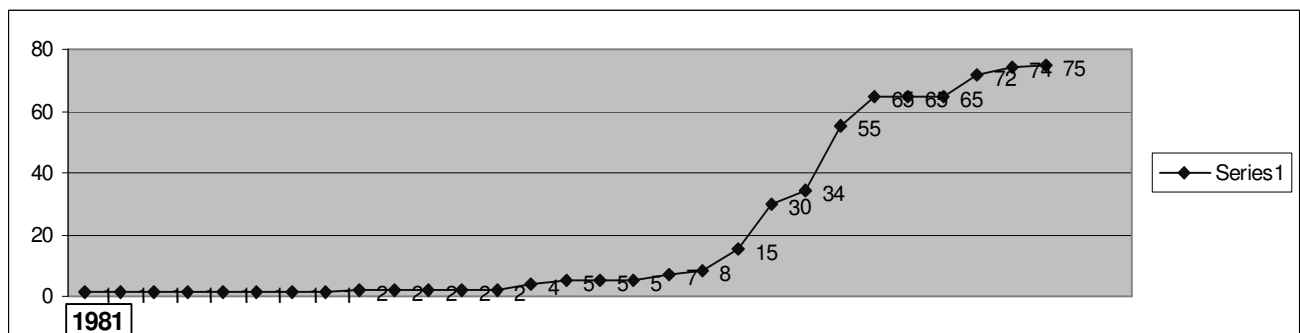
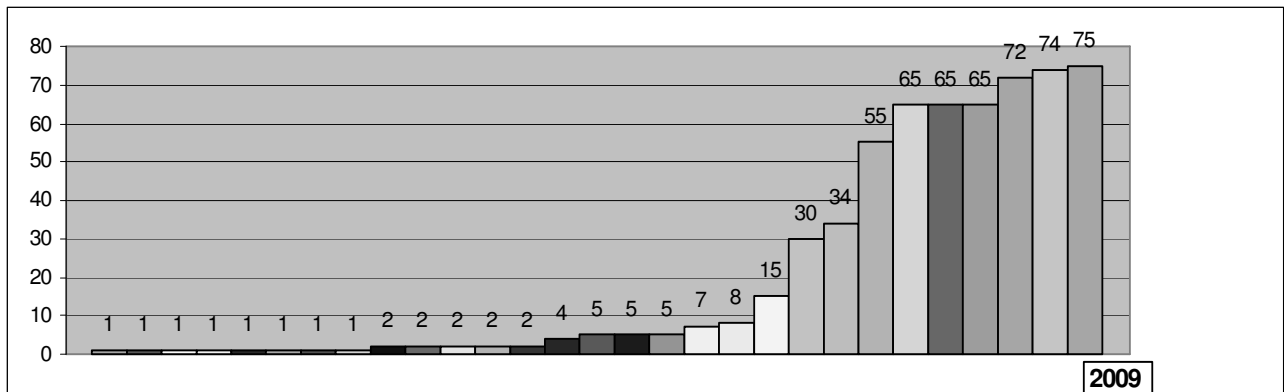
STATISTICAL REPRESENTATION OF COLLEGES OF EDUCATION IN JAMMU PROVINCIE.

Year No of colleges

| | |
|-----------|----|
| Year 1981 | 3 |
| Year 1991 | 3 |
| Year 2001 | 36 |
| Year 2010 | 75 |

Bar Chart with the values diplayed at each bar

Graphical Representation of Number of Non- Govt Colleges of Education in Jammu Province.



STATISTICAL DATA OF NON-GOVT. COLLEGES OF EDUCATION (YEARWISE)

| <u>YEAR</u> | <u>NO. OF COLLEGES</u> | <u>YEAR</u> | <u>NO. OF COLLEGES</u> |
|-------------|------------------------|-------------|------------------------|
| 1981 | 1 | 1996 | 5 |
| 1982 | 1 | 1997 | 5 |
| 1983 | 1 | 1998 | 7 |
| 1984 | 1 | 1999 | 8 |
| 1985 | 1 | 2000 | 15 |
| 1986 | 1 | 2001 | 30 |
| 1987 | 1 | 2002 | 34 |
| 1988 | 1 | 2003 | 55 |
| 1989 | 2 | 2004 | 65 |
| 1990 | 2 | 2005 | 65 |
| 1991 | 2 | 2006 | 65 |
| 1992 | 2 | 2007 | 72 |
| 1993 | 2 | 2008 | 74 |
| 1994 | 4 | 2009 | 75 |
| 1995 | 5 | | |

Complete details of Non Govt. Colleges of Education affiliated in the University of Jammu during the session 2011-2012 is as under:—

| S.No. | Name of the College/ Address/Tel./Fax./email | Distance from Jammu University | Name of the Chairperson | Teaching subjects offered |
|--------------|---|---|------------------------------------|--|
| 1. | MIER College of Education B.C. Road, Jammu. Ph. 0191-2546078 email-akg_mier@rediffmail.com | 2 kms | Dr. Arun Gupta | English, Hindi, General Science, Mathematics and Social Studies |
| 2. | M.C. Khalsa College of Education Chand Nagar, below Gumat, Jammu Ph. 0191-2546711, 2576597. Fax-2576597 | 1½ kms | S. Harbans Singh | General Science, Social Studies, English, Mathematics, Hindi and Punjabi |
| 3. | Dogra College of Education Maluk Bhawan, Bassi Kalan, Bari Brahmana, Jammu Ph. 01923-220893 | 10 kms | Sh. Gulchain Singh Charak | English, Hindi, Punjabi, Social Studies, General Science and Mathematics. |
| 4. | N.S.M. College of Education Anand Nagar, Patta Bohri, Jammu Ph. 0191-2554601, 2552023 email - parneeshmahajan_nsm@yahoo.co.in | 6 kms | Sh. T.R. Mahajan | General Science, Social Studies, English, Mathematics, Hindi and Punjabi |
| 5. | Vivekananda College of Education Lakhanpur, Kathua Ph./Fax - 01922-285111 email-vnc_lakhanpur@yahoo.co.in | 85 kms | Sh. Sudershan Gupta | English, Hindi, Punjabi, Social Studies, General Science and Mathematics. |
| 6. | Shivalik College of Education Shiv Nagar, National Highway, Udhampur Ph. 01992-270474, 273575 Fax-270373 email-migulati@rediffmail.com | 62 kms | Mr. Mineesh Gulati | English, Hindi, Punjabi, Science, Social Studies and Mathematics |
| 7. | Divya College of Education Lower Gaddi Garh, Miran Sahib, Jammu Ph. 0191-2262956, 2263895 | 7 kms | Sh. K.K. Shastri | General Science, Social Studies, English, Mathematics and Hindi |
| 8. | Chenab College of Education Langar, Opp. SBI Kaluchak, Jammu Ph. 0191-2480873, 24803913 email-collegechenab@yahoo.co.in | 8 kms | Sh. R.S. Chib, VSM | General Science, Social Studies, English, Mathematics, Hindi and Punjabi |
| 9. | Luthra College of Education Bohri, Talab Tillo, Jammu Ph. 0191-2503956, 2506537 Fax-2503956 | 5 kms | Sh. Rajive Luthra | Hindi, Science, Social Studies, Mathematics English, Punjabi, Urdu. |
| 10. | KCS College of Edu. for Women Opp. Roop Nagar Police Post, Paloura, Jammu Ph. 0191-2592952 Fax - 2592479 email-kcs_women@yahoo.co.in | 8 kms | Mrs. Purnima Chaudhri | General Science, Social Studies, English, Mathematics, Hindi and Punjabi |
| 11. | Trikuta College of Education Nardni Raipur, Bantalab Road, Jammu Ph. 0191-2594262, 2597868 Fax - 2594262 | 15 kms | Dr. Roop Lal Sharma | English, Hindi, Punjabi, Social Studies, Science and Mathematics |
| 12. | Adarsh College of Education Tarore Bridge, N-Highway, Distt. Samba Ph. 01923-242818, 242882 Fax-242816 email-roney_792001@yahoo.co.in | 22 kms | Sh. A.K. Kapoor | General Science, Social Studies, English, Mathematics, Hindi and Punjabi. |
| 13. | Tariq College of Education Near Salani Bridge, Rajouri Ph. 01962-264273, 264442 Fax.264273 email-tariqcollea@yahoo.co.in | 150 kms | Sh. T.M. Tariq | General Science, Social Studies, English, Mathematics, Hindi, Urdu and Punjabi. |
| 14. | Kalra College of Education Industrial Estate Complex, Phse-II, Udhampur Ph. 01992-270267 | 65 kms | Sh. Aman Kalra | English, Hindi, Punjabi, Science, Mathematics and Social Studies |
| 15. | New Millennium National College of Edu., Sarore, Jammu Ph. 0191-2460572 | 15 kms | Sh. Ram Paul | General Science, Social Studies, English, Mathematics, Hindi and Punjabi. |
| 16. | Sher-e-Kashmir College of Edu. Ajit Nagar, Gadi Garh, Near Airport, Jammu Ph./Fax - 0191-2263462 | 5 kms | Mrs. Narinder Kaur | General Science, Social Studies, English, Mathematics, Hindi and Punjabi |
| 17. | Bhargava College of Education Samba, Ph. 01923-243253, 246169, 246170 email-bhargavacollegeof_education@rediffmail.com | 40 kms | Sh. Parkash Sharma | English, Hindi, Punjabi, Science, Mathematics and Social Studies |
| 18. | National College of Education Purkhoo Camp, Domana, Jammu Ph. 0191-2604464, 2604549 Fax-2604537 email-nce_2001@rediffmail.com | 13 kms | Sh. Vidhi Singh | General Science, Social Studies, English, Mathematics, Hindi, Urdu and Punjabi |

| | | | | |
|-----|---|---------|---|--|
| 19. | Calliope College of Education Jammu-Akhnoor Highway, Doomi, Jammu Ph. 0191-253820 email-manish-suri@rediffmail.com | 20 kms | Er. Manish Suri | General Science, Social Studies, English, Mathematics, Hindi and Punjabi |
| 20. | New Gandhi Memorial College of Edu. Dhinde Kalan, Miran Sahib, Jammu Ph. 01923-263083 Fax. 01923-263083 | 12 kms | Mr. Sushil Mahajan | English, Hindi, Punjabi, Science, Mathematics and Social Studies |
| 21. | Swami Vishwatamanand Saraswati College of Education, Sunderbani Ph./Fax - 01960-234952 | 70 kms | Shri Swami Vishwatamanand Saraswati Ji Maharaj | English, Urdu, Hindi, Punjabi, Mathematics General Science, Social Studies, Environmental Science. |
| 22. | Atman College of Education Opp. Greater Kailash, Marble Market, Jammu Ph. 0191-2481971, 2483760 Fax-2481897 email-atmancollegeofeducation@rediffmail.com | 3 kms | Sh.Sanjay Mahajan | General Science, Social Studies, English Mathematics, Hindi and Punjabi |
| 23. | Islamia Faridiya College of Education Kishtwar. Ph. 01995-260141, 260140 Fax - 260141 | 232 kms | Sh. T.A. Kichloo | English, Hindi, Social Studies, General Science, Mathematics, Punjabi, Urdu |
| 24. | Harvard College of Education Karan Bagh, Airport Road, Jammu Ph. - 0191-263789, 263790 | 5 kms | S. Sudershan Singh Wazir | General Science, Social Studies, English Mathematics, Hindi and Punjabi |
| 25. | CMH College of Education Chowdhi Top, Sainik Colony, Jammu Ph. 0191-2565283 | 10 kms | Sh. Z.A. Choudhary | English, Hindi, Punjabi, Social Studies, General Science and Mathematics |
| 26. | KC College of Education Akhnoor Road, Jammu Ph. 0191-2502006 Fax. 2504711 email-kceducation@rediffmail.com | 7 kms | Sh. Sudershan Mahajan | English, Hindi, Punjabi, General Science, Mathematics and Social Studies. |
| 27. | Guru Nanak College of Education Jallo Chack, Bari Brahmana, Samba Ph. 01923-2480004, 285020 | 10 kms | Prof. Harbans Singh | General Science, Social Studies, English, Mathematics, Hindi and Punjabi |
| 28. | R.K. College of Education Bari Brahmana, Jammu Ph. 01923-222825 Fax - 220217 | 14 kms | Sh. Ved Parkash | Social Studies, Mathematics, General Science, English, Hindi and Punjabi |
| 29. | Ashoka College of Education Monke-Talab, Near Fish Seed Farm, Kathua Ph. 01922-238816, Fax - 1922-233385 email-ashokaetr@rediffmail.com | 80 kms | Sh. Kamal Gupta | English, Hindi, Punjabi, Social Science General Science and Mathematics |
| 30. | Guru Gang Dev Ji College of Education Chhan Arorian, Hiranagar, Kathua Ph. 01922-255167, 255567 Fax-255486 email-ggdj@rediffmail.com | 65 kms | Shri Swami Vishwatamanand Saraswati Ji Maharaj | English, Hindi, Punjabi, Mathematics, General Science and Social Studies |
| 31. | B.N. College of Education Nawabad Sunjuwan, Jammu Ph. 0191-2460980 Fax-2460980 | 4½ kms | Er. A.G.Kohli | General Science, Social Studies, English, Mathematics, Hindi and Punjabi |
| 32. | New Age College of Education Phinter (Billawar) Distt. Kathua Ph. 01922-266389, 266390 | 80 kms | Sh. Sohan Lal | Hindi, Urdu, English, Punjabi, Social Studies and Science |
| 33. | Sai Shyam College of Education Ghou Manhasan, Jammu Ph. 0191-2644319, 2505205 | 11 kms | Sh. C.L. Tickoo | General Science, Social Studies, English, Mathematics, Hindi, Urdu and Punjabi |
| 34. | Vaishno Devi College of Education Reasi. Ph. 01991-244273 email-sudeshpuri@hotmail.com | 69 kms | Sh. S.K. Puri | English, Urdu, Hindi, Punjabi, Science, Social Studies and Mathematics |
| 35. | Ramisht College of Education Basohli, Distt. Kathua Ph. 01921-251929, Fax -01921-251713 email-www.RamishtCollege.com | 140 km | Sh. Rajinder Parsad | General Science, Social Studies, English, Hindi, Mathematics and Punjabi |
| 36. | J.K. College of Education Kunjwani, Jammu Ph. 0191-2480070, 2481865 fax - 2480723 email-jkps@yahoo.com | 10 kms | Sh. Raj Daluja | Math, Science, Social Studies, Hindi, English and Punjabi |
| 37. | Sant Mela Singh College of Education Near Digiana Ashram, Jammu Ph. 0191-2430346 Fax - 2430346 | 4 kms | Prof. Anmol Singh | Mathematics, Science, English, Hindi Punjabi and Social Studies |
| 38. | Himalayan College of Education Rajouri Ph. - 01962-262320, Fax - 263510 | 150 kms | Mohd. Muslim Wani | General Science, Social Studies, English, Mathematics, Urdu, Hindi and Punjabi |
| 39. | Poonch College of Education Poonch Ph./Fax - 01965-222729 | 246 kms | Mohd. Sayed Beig | Hindi, Urdu, English, Punjabi, Mathematics, Science and Social Studies. |

| | | | | |
|------|---|---------|--------------------------|---|
| 40. | K.C. Gurukul College of Education Opposite BSF Gate, Paloura, Jammu Ph. 0191-0506033. Fax - 2548754 email-kcgurukulcollege@yahoo.co.in | 6 kms | Sh. Arvind Mahajan | English, Hindi, Punjabi, Science, Social Studies and Mathematics |
| 41. | Baba Farid College of Education Hatli road, Kathua Ph. 01922-286689, 235864 | 88 kms | Mrs. Harmeet Kour | General Science, Social Studies, English, Mathematics, Hindi and Punjabi |
| 42. | Shastri Memorial College of Education, Reasi | 69 Kms. | Sh. Tilak Raj Kohli | General Science, Social Studies, English, Mathematics, Hindi and Punjabi |
| 43. | Kalra College of Education Poonch House, Kud (Patnitop) Distt. Udhampur Ph. 01992-288222 | 90 kms | Sh. S.P. Kalra | English, Hindi, Punjabi, Science, Mathematics and Social Studies |
| 44. | Vimal Muni College of Education Ramgarh (Samba) Ph./Fax - 01923-234120 | 28 kms | Mrs. Arun Gupta | Mathematics, English, Hindi, Punjabi, General Science and Social Studies |
| 45. | Thakur Dharam Singh College of Education Near Old Bus Stand, Ward No. 9 Kathua Ph - 01922-233263, 237263 | 85 kms | Thakur Gandharab Singh | General Science, Social Studies, English, Mathematics, Hindi and Punjabi |
| 46. | Rajiv Gandhi Memorial College of Education National Highway, Kalibari, Kathua Ph. 01922-235503, 234503 | 80 kms | Mrs. Anu Sharma | English, Hindi, Urdu, Punjabi, Social Studies and Science. |
| 47. | Shirdee College of Education Kunjwani-Bishnah Road, Jammu Ph. 01923-285397 Fax - 0191-2472369 email-shirdeecollege369@rediffmail.com | 10 kms | Er. R.K. Puri | English, Hindi, Punjabi, General Science, Social Studies and Mathematics. |
| 48. | Bhartiya College of Education Udhampur. Ph./Fax - 01992-276068 email-bhartiyacollege@rediffmail.com | 65 kms | Ms. Madhu Bala | General Science, Social Studies, English Mathematics, Hindi and Punjabi |
| 49. | Surya College of Education Jammu Pathankot NHW Logate More, Kathua Ph./Fax - 01922-234284 | 75 kms | Sh. Surjeet Singh Jamwal | General Science, English, Mathematics Hindi, Punjabi and Social Studies |
| 50. | Ranjit College of Education Rakh-Bandhuwala, Kunjwani, Jammu Ph. Ph. 0191-2482402 email-ranjittrust@rediffmail.com | 7 kms | S. Nirmaljit Singh | General Science, Social Studies, English, Mathematics, Hindi and Punjabi |
| 51. | Tagore College of Education Akulpur (Lower Muthi) Jammu Ph./Fax 0191-2642213 | 9 kms | Sh. Om Parkash Gupta | English, Hindi, Punjabi, Science, Mathematics and Social Studies |
| 52. | Kawa College of Education Patoli Gurha Brahmana, Akhnoor Road, Jammu Ph. 0191-2307838 Fax 2476817 email-kawa_college@rediffmail.com. | 8.5 kms | Sh. M.S. Katoch | Hindi, English, General Science, Mathematics, Social Studies and Punjabi |
| 53. | Saraswati College of Education 17 Miles, Najwal, P.O. Jakh, Jammu Ph. 01923-285194 Fax - 0191-2474938 email-saraswaticollege@rediff.com | 21 kms | Sh. Rajesh Sharma | Hindi, English, Mathematics, Science, Social Studies and Punjabi |
| 54. | Hill People College of Education Near Kanger Mohr, Kot Bhalwal, Jammu Ph. 0191-2623655 | 15 kms | Sh. Khalid Jhangir Malik | English, Hindi, Urdu, Punjab, Social Studies, General Science and Mathematics |
| 55. | Sacred Heart College of Education Azad Colony, Paloura Lower Roop Nagar, Jammu Ph. 0191-2596045, 25960456 Fax-2596045 email-sacredheart_college@rediffmail.com | 8 kms | Smt. Rajni Bala | English, Hindi, Punjabi, Mathematics, General Science and Social Studies |
| 56. | Beacon College of Education Kot-Bhalwal, Jammu Ph. - 0191-2623100, 2623677 email-beaconcollege@rediffmail.com | 12 kms | Smt. Nirmal Sharma | General Science, Social Studies, English, Mathematics and Hindi and Punjabi |
| *57. | Bhai Veer Singh College of Education Dera Ganotra, Tarore, Jammu Ph. 0191-2474510 email-bvsm_jmu@yahoo.co.in | 18 kms | Sh. I.P.S. Bali | English, Hindi, Punjabi, Social Studies, Mathematics and Science |
| 58. | Bhagat Kabir College of Education Hatli Road, Kathua Ph. - 01922-286689 | 88 kms | Capt. Sevinder Singh | General Science, Social Studies, English, Mathematics, Hindi and Punjabi |
| 59. | Durga College of Education for Women Katra, Reasi Ph. 01991-233733, 233722 email-durgacollege@rediffmail.com | 42 kms | Sh. Brij Mohan Sharma | English, Hindi, Social Studies, Science, Mathematics and Punjabi |
| 60. | Jan College of Education Kangar Morh, Kot-Bhalwal, Jammu Ph. 0191-2623659, Fax-2623716 email-ajazjan7@yahoo.com. | 12 kms | Sh. Ajaz Jan | English, Hindi, Punjabi, Mathematics, Science and Social Studies. |

* **The case of Bhai Veer Singh College of Education (S.No.57) is pending because of non availability of NOC from State Government.**

| | | | | |
|-----|--|--------|---------------------------|---|
| 61. | Handa College of Education Sector-D, Sainik Colony, Jammu Ph. 0191-2307571, Fax 2463784 email-hceo2004@yahoo.com. | 6 kms | Mrs. Veena Handa | English, Hindi, Punjabi, Social Studies, General Science and Mathematics |
| 62. | Taawish College of Education Chhani Rama, Near Narwal, Transport Nagar, Jammu Ph. 0191-2307977 Fax - 2474241 email-info@tsedu.org. | 3 kms | Mrs. Pooja Malhotra | Hindi, English, Punjabi, Mathematics, Science and Social Studies |
| 63. | Galaxy College of Education Sector-E, Extn. Sainik Colony, Jammu 0191-2465559 | 5 kms | Sh. Arun Kumar Sharma | Punjabi, English, Social Studies, Mathematics, Science and Hindi |
| 64. | Cosmic College of Education Lakhanpur, Distt. Kathua Ph. 9419151019 | 90 kms | Swami Pramanand Saraswati | General Science, Social Studies, English, Mathematics, Hindi and Punjabi |
| 65. | K.C. Minerva College of Education Ramgarh (Vijaypur), Distt Samba 01923-234072. | 18 kms | Sh. Koshal Dogra | General Science, Social Studies, English Mathematics, Hindi and Punjabi |
| 66. | Lal Bhadur Shastri College of Education, Raj Bagh Kathua. | 70Km | Dr. Surinder Kohli | General Science, Social Studies, English Mathematics, Hindi and Punjabi |
| 67. | Bharat College of Education, National Highway Hatli Morh, Kathua. | 85 Km | S. Harjinder Singh Anand | General Science, Social Studies, English Mathematics, Hindi and Punjabi |
| 68. | R.S. College of Education, Village Kanayari, Jaglote, Kathua. | 87 Km | Sh. K.K. Bakshi | General Science, Social Studies, English Mathematics, Hindi and Punjabi |
| 69. | Satyam College of Eduation, Opposite R.T.O Office Lakhanpur, Kathua | 85 Km | Sh. Kuldeep Wahi | General Science, Social Studies, English Mathematics, Hindi and Punjabi |
| 70. | R.M. College of Education, Sainik Colony, Jammu. | 6 Km | Sh. Rameshwar Mengi | General Science, Social Studies, English Mathematics, Hindi and Punjabi |
| 71. | Thakur Anant Singh College of Education, Sainik Colony, Jammu. | 6 Km | Sh. Sham Singh | General Science, Social Studies, English Mathematics, Hindi and Punjabi |
| 72. | New Modern College of Education Sainik Colony, Jammu. | 6 Km | Sh. Tarun Bahal | General Science, Social Studies, English Mathematics, Hindi and Punjabi |
| 73. | Guru Teg Bahadur College of Education Jagatpur, Lakhanpur, Kathua | 88 Km | S. Nihal Singh | General Science, Social Studies, English Mathematics, Hindi and Punjabi |
| 74. | Shri Shri Parmahansa Yogananda College of Education, Kathua | 86 Km | Sh.V.P.Sharma | General Science, Social Studies, English Mathematics, Hindi and Punjabi |
| 75. | Sh. Bhim Singh College of Education, Udampur e.mail:- bhim.singh620@gmail.com Phone No.:- 7298271810, Mob:- 9419703745, 9797502513 | 65 Km | Sh. Parveen Singh | General Science, Social Studies, English Mathematics, Hindi and Punjabi |

- *NOTE -**
1. Colleges at S.No. 1 and S.No. 2 are permanently affiliated while others are temporarily affiliated.
 2. All colleges are co-educational except S.No.10 & 59 which are meant for women.

DISTRICT JAMMU

| | <u>NAME OF THE COLLEGE OF EDUCATION</u> | <u>DISTANCE FROM UNIVERSITY</u> |
|----|--|--|
| 1 | MIER College of Education, B.C. Road, Jammu | 2 KM |
| 2 | M.C. Khalsa College of Education, Chand Nagar, Below Gumat, Jammu | 1 ½ KM |
| 3 | NSM College of Education, Anand Nagar, Bohri, Jammu | 6 KM |
| 4 | Divya College of Education, Lower Gaddi Garh, Miran Sahib, Jammu | 7 KM |
| 5 | Luthra College of Education, Bohri, Talab Tillo, Jammu | 5 KM |
| 6 | K.C.S. College of Education for Women, Upper Paloura, Jammu | 8 KM |
| 7 | Trikuta College of Education, Nardni Raipur (Kot-Bhalwal Road) Jammu | 15 KM |
| 8 | New Millennium National College of Education, Tarore | 15 KM |
| 9 | Sher-e-Kashmir College of Education, Ajit Nagar, Near Airport, Jammu | 5 KM |
| 10 | National College of Education, Purkhoo Camp, Domana, | 13 KM |
| 11 | Calliope College of Education, Jammu-Akhnoor Highway, Dommi, Jammu. | 20 KM |
| 12 | New Gandhi Memorial College of Education, Miran Sahib, Jammu | 12 KM |
| 13 | Atman College of Education, Marble Market Opp. Greater Kailash, Kunwani Bye-Pass | 3 KM |
| 14 | Harvard College of Edu. Gadi Garh, Airport Road Jammu. | 5 KM |
| 15 | KC College of Education, Akhnoor Road, Jammu | 7 KM |
| 16 | Guru Nanak College of Education, Jallo Chack Kunjwani, Jammu | 10 KM |
| 17 | B.N. College of Education, Nawabad-Sunjwan, Jammu | 4 ½ KM |
| 18 | Sai Shyam College of Education, Ghou-Manhasan Jammu, | 11 KM |
| 19 | J.K. College of Education, Kunjwani, Jammu | 10 KM |
| 20 | Sant Mela Singh College of Edu. Digiana, Jammu | 4 KM |
| 21 | K.C. Gurukul College of Education, | 6 KM |
| 22 | Shirdee College of Education | 10 KM |
| 23 | Ranjit College of Education | 7 KM |
| 24 | Tagore College of Education | 9 KM |
| 25 | Kawa College of Education | 8.5 KM |
| 26 | Hill People College of Education | 15 KM |
| 27 | Sacred Heart College of Education | 8 KM |
| 28 | Beacon College of Education, Kot-Bhalwal. | 12 KM |
| 29 | Jan College of Education, Kot-Bhalwal, Jammu | 12 KM |
| 30 | Handa College of Edu.Sainik Colony, Jammu | 6 KM |
| 31 | Taawish College of Education, Narwal, Jammu | 3 KM |
| 32 | Galaxy College of Education, Sainik Colony, Jammu | 5 KM |
| 33 | Thakur Anant Singh College of Education, Sainik colony, Jammu | 6 KM |
| 34 | New Modern College of Education, Sainik colony, Jammu | 6 KM |
| 35 | R.M. College of Education, Jammu, Sainik Colony, Jammu | 6 KM |

DISTRICT KATHUA

| | <u>NAME OF THE COLLEGE OF EDUCATION</u> | <u>DISTANCE FROM UNIVERSITY</u> |
|----|---|--|
| 1 | Vivekananda College of Education, Lakhanpur, Kathua. | 85 KM |
| 2 | Ashoka College of Education, National , Kathua | 80 KM |
| 3 | Guru Gang Dev Ji College of Educ. Chann Arrorian, Hiranagar, Kathua | 65 KM |
| 4 | New Age College of Education, Phinter (Billawar) Distt. Kathua | 80 KM |
| 5 | Ramisht College of Education, Basohli, (Kathua) | 140 KM |
| 6 | Baba Farid College of Education, Hatli Morh, Kathua | 88 KM |
| 7 | Thakur Dharma Singh College of Education, Kathua | 85 KM |
| 8 | Rajiv Gandhi Memorial College of Education, Kathua | 80 KM |
| 9 | Surya College of Education, Kathua | 75 KM |
| 10 | Bhagat Kabir College of Edu. Hatli Road. | 88 KM |
| 11 | Cosmic College of Education, Lakhanpur, Kathua | 90 KM |
| 12 | Lal Bhadur Shastri College of Education | 70 KM |
| 13 | Bharat College of Education, Kathua | 85 KM |
| 14 | R.S. College of Education, Kathua | 87 KM |
| 15 | Satyam College of Education, Kathua | 85 KM |
| 16 | Guru Teg Bhadur College of Education, Kathua | 88 KM |
| 17 | Shri Shri Paramhansa Yogananda College of Education | 86 KM |

DISTRICT UDHAMPUR

| | <u>NAME OF THE COLLEGE OF EDUCATION</u> | <u>DISTANCE FROM UNIVERSITY</u> |
|---|--|--|
| 1 | Shivalik College of Education, Shiv Nagar, NH-1A, Udhampur | 62 KM |
| 2 | Kalras College of Education, Hospital Road, Udhampur | 65 KM |
| 3 | Kalra College of Education, Poonch House, Kud | 90 KM |
| 4 | Bhartiya College of Education, Udhampur | 65 KM |
| 5 | Bhim Singh College of Education, Udhampur | 65 KM |

DISTRICT SAMBA

| | <u>NAME OF THE COLLEGE OF EDUCATION</u> | <u>DISTANCE FROM UNIVERSITY</u> |
|---|--|--|
| 1 | Dogra College of Educ., Basi Kalan, Bari Brahmana Jammu | 10 KM |
| 2 | Chenab College of Education, Langer, Opp. S.B.I. Kaluchak, Jammu | 8 KM |
| 3 | Adarsh College of Education, Tarore Bridge, N H, The. Samba, Jammu | 22 KM |
| 4 | Bhargava College of Education, Samba | 40 KM |
| 5 | CMH College of Education, Chowdhi Top, Sainik Colony, Jammu | 10 KM |
| 6 | R.K. College of Education, Bari Brahmana Jammu. | 14 KM |
| 7 | Vimal Muni College of Edu., Ramgarh, Jammu | 28 KM |
| 8 | Saraswati College of Education, Najwal, Jammu-Pathankot NH, Jammu | 21 KM |
| 9 | KC Minerva College of Education | 18 KM |

DISTRICT RAJOURI

| | <u>NAME OF THE COLLEGE OF EDUCATION</u> | <u>DISTANCE FROM UNIVERSITY</u> |
|---|--|--|
| 1 | Tariq College of Education, Ward No.1, Near Salani Bridge, Rajouri | 150 KM |
| 2 | Swami Vishwatamanand Saraswati College of Education, Sunderbani, Rajouri | 70 KM |
| 3 | Himalayan College of Education, Rajouri. | 150 KM |

DISTRICT KISHTWAR

| | <u>NAME OF THE COLLEGE OF EDUCATION</u> | <u>DISTANCE FROM UNIVERSITY</u> |
|---|--|--|
| 1 | Islamia Faridia College of education, Kishtwar | 232 KM |

DISTRICT REASI

| | <u>NAME OF THE COLLEGE OF EDUCATION</u> | <u>DISTANCE FROM UNIVERSITY</u> |
|---|--|--|
| 1 | Vaishno Devi College of Education, Reasi | 69 KM |
| 2 | Shastri Memorial College of Education, Reasi | 69 KM |
| 3 | Durga College of Education, Katra | 42 KM |

DISTRICT POONCH

| | <u>NAME OF THE COLLEGE OF EDUCATION</u> | <u>DISTANCE FROM UNIVERSITY</u> |
|---|--|--|
| 1 | Poonch College of Education, Poonch | 246 KM |

III. NORMS GOVERNING ADMISSION OF CANDIDATES TO THE B.Ed. COURSE IN THE NON-GOVERNMENT AFFILIATED COLLEGES OF EDUCATION

1. DURATION OF BACHELOR'S DEGREE COURSE IN EDUCATION (B.Ed. COURSE)

- 1.1 B.Ed. Course is a whole time course of the duration of one academic year.
- 1.2 A person, as long as he is on the rolls of B.Ed course, **shall not be eligible to attend any other course of instruction or appear in any other examination of the University**, provided that a candidate who has been placed under reappear category in one course/paper of an examination, other than the qualifying examination, or was scheduled to appear in the examination (other than the qualifying examination) either as a regular or private candidate before the commencement of class work of B.Ed. course but could not do so on account of delay in the conduct of said examination, for reasons beyond his control, shall be eligible to appear in that examination, even though he/she has been duly admitted to the B.Ed. course.
- 1.3 **Any person in employment or self-employment or engaged in a business or profession is not eligible for admission to the B.Ed. course in the Non-Government colleges.** Such a person may, however, be considered for admission, provided :
- i) he/she **produces a certificate** from his/her employer that the employer has no objection to his/her employee pursuing whole time B.Ed course and that the employee is on **authorised leave** duly sanctioned by the competent authority for the purpose;
 - ii) in the case of self-employed person or a person engaged in business or a profession, the person concerned **gives an undertaking** on a stamped paper of proper value duly attested by the Notary that he/she will devote his/her whole time for studies as a student during the period he/she remains on roll of the College for the course and shall not engage in any business or profession or avocation during this period or engage in any other activity which is likely to interfere with his/her studies in the College.

2. MEDIUM OF INSTRUCTION AND EXAMINATION

English shall be the medium of instruction. Medium of examination shall be English, Hindi & Urdu only (as per decision of University Council).

3. DEFINITIONS

- 3.1 "Course" means the B.Ed. Course.
- 3.2 **"Qualifying Examination" for the purpose of admission to the B.Ed course means Bachelor's Degree Examination** (on the basis of which the candidate becomes eligible for admission to the B.Ed. course in terms of clause 6.1) in the faculties of Arts, Science, Social Sciences, Commerce, Engineering, Medicine, Agriculture, Veterinary Science, Forestry and Music and Fine Arts of the University of Jammu or any other statutory University in India registered with the Association of Indian Universities. **(The candidates holding Bachelor's Degree of one sitting pattern are not eligible for admission to the B.Ed course)**
- 3.3 **"Merit" means percentage of marks obtained by the candidate in the qualifying examination.**
- 3.4 "Open Merit Category" means consideration under Non-Reserved Category on the basis of inter-se merit.
- 3.5 "Incomplete Form" means the Application Form which is wrongly filled in, **gives incomplete/wrong/false information, not attested by the prescribed authority**, not accompanied by the **requisite late fee** in full (if applicable) or **deficient** in respect of one or more requisite certificate(s)/documents(s).
- 3.6 **"Late Receipt" means the Application Form not received in the University during working hours on or before the last date notified for the purpose.**
- 3.7 "Authority to attest the Application Form and Photograph" is either **the Principal** of the Institution from where the candidate passed the qualifying examination or where he is studying at present or **a gazetted officer**.
- 3.8 "Candidate" means the person seeking admission to the B.Ed. course.

4. CENTRALISED ADMISSION

- 4.1 No Non-Government College of Education other than the M.C. Khalsa College of Education* shall make admission of the candidates to the B.Ed. course on its own. Selection of candidates for all seats in B.Ed course in each Non-Government affiliated college of education shall be made by the University.

5. ELIGIBILITY

- 5.1 **Admission to the B.Ed. course in the Non-Government Colleges of Education shall be open to those candidates who have passed Bachelor's Degree Examination in the faculties of Arts, Science, Social Sciences, Commerce and Management (under 10+2+3 or 10+2+2/10+1+3 pattern), Engineering, Medicine,**

Agriculture, Veterinary Science, Forestry and Music and Fine Arts from the University of Jammu or any other 45% statutory University in India registered with the Association of Indian Universities and have secured at least 45% of the aggregate marks in the qualifying examination in case of general category.

For disadvantaged sections like SC/ST/ Other Backward Classes(O.B.C.)/ Area Adjoining Actual Line of Control(A.L.C.) /Resident of Backward Area (R.B.A.)/Disabled candidates, the eligibility will be 40% in the qualifying examination. (The principle of rounding of 1/2 marks and above into one whole mark shall also be applicable, meaning thereby that a candidate having secured 44.50%, in case of General Category AND 39.50% in case of Reserved category.

However, one sitting B.A. Degree (External Examination) conducted by any University in the country is not recognised by this University for the purpose of admission to the B.Ed course.

6. SUBMISSION OF APPLICATION FORM

6.1 Before submitting the Application Form to the University, candidate shall **read the norms carefully** to ensure that he/she fulfils all the eligibility conditions laid down for admission to B.Ed. course. In case, it is detected at any subsequent stage that a candidate does not fulfil the eligibility criteria and/or has furnished incorrect information, concealed/supressed material facts, his/her candidature will be cancelled, even if already admitted. The University will, in no way, be responsible for the consequences emanating therefrom.

6.2 All candidates (Both Local as well as Non-Local) desirous of seeking admission to the B.Ed. course in the Non-Government Colleges, shall submit the Application Forms complete in all respects by Registered Post/Speed Post only so as to reach the office as per details indicated in the advertisement notice

NO APPLICATION FORM FROM ANY CANDIDATE SHALL BE ACCEPTED BY HAND

6.3 A candidate shall not be allowed to make any change in the Application Form, by way of addition, deletion or alteration, once it has been submitted to the University.

6.4 **INCOMPLETE APPLICATION FORMS AND THOSE RECEIVED AFTER THE NOTIFIED DATE, SHALL NOT BE ENTERTAINED UNDER ANY CIRCUMSTANCES AND THE UNIVERSITY SHALL NOT ENTER INTO ANY CORRESPONDENCE IN THIS REGARD.**

7. CERTIFICATES AND OTHER DOCUMENTS TO BE ATTACHED*

7.1 The Application Form, duly filled in, should be accompanied by photo copies (signed by the candidate and attested by the authority mentioned at clause 3.7) of the following certificates/documents

- i) Matriculation or equivalent examination certificate.
- ii) Marks Certificate of 12th Class examination.
- iii) Bachelor's Degree/Provisional Certificate issued by the institution/University.
- iv) Marks Certificate of each part of Bachelor's Degree examination.
- v) Certificate of good conduct from the Principal of the college last attended or Head of the institution where the candidate is studying at present or Gazetted Officer.
- vi) Category certificate issued by the competent authority as per latest SRO issued by the J&K State Government for local candidates and by the competent authority as notified in other states. (by those candidates who claim consideration under Reserved Categories).
- vii) Certificate of being Permanent Resident of Jammu province of the Jammu and Kashmir State issued by the Competent Authority by those candidates who :
 - a) passed the qualifying examination from University other than the University of Jammu but belong to the areas falling within the territorial jurisdiction of the University of Jammu and claim consideration for admission to the course under clause 8.1 (a) (ii)
 - b) claim consideration for admission under any of the reserved categories.
- viii) Affidavits as per specimens given at **Annexure-I and II** duly attested by First Class Magistrate or a Notary Public (by such candidates as claim consideration under Reserved Category in terms of clause 7.2).
- ix) A certificate and an undertaking, as the case may be, by such candidates as are in employment or may be self-employed or are engaged in business or profession in terms of clause 7.3.
- x) Certificate (on the prescribed form attached with the Brochure Annexure III) for candidates seeking admission under 9.1a(iii).
- xi) An affidavit as per specimen given at Annexure IV duly attested by First Class Magistrate or a Notary Public {by such candidates as claim admission under clause 9.1.a(iii) }.

IMPORTANT NOTE: Candidates seeking admission to the course under any reserved category must attach with the Application Form attested copy of the certificate on the form prescribed and issued for the purpose by the competent authority under law in force. **Failure to attach the attested copy of such certificate with the Application Form will render the candidate ineligible for admission under reserved category.** Certificate on plain paper will not be entertained. The certificates of candidates belonging to categories of SC/ST/ Other Backward Classes(O.B.C.)/ Area Adjoining Actual Line

if these do not conform to the latest SRO/Order issued by the J&K Government for the purpose. In case, a candidate claims admission under reserved category but does not attach the requisite certificate in support of his/her claim with the Application Form and if found otherwise eligible, will be considered under Open Merit Category. **NO CERTIFICATE OR ATTESTED COPY THEREOF WILL BE ENTERTAINED AFTER THE LAST DATE NOTIFIED FOR THE SUBMISSION OF APPLICATION FORMS. THE CLAIM OF THE CANDIDATE FOR CONSIDERATION UNDER ANY RESERVED CATEGORY WITH "UNDER PROCESS CERTIFICATE" OF CATEGORY WILL NOT BE ENTERTAINED.**

- 7.2 A candidate seeking admission under reserved category must submit alongwith the Application Form an AFFIDAVIT as per specimen given at Annexure-I duly attested by a First Class Magistrate or a Notary Public to the effect that category certificate and other certificates/documents (attested copies of which are attached with the Application Form) are genuine and in the event of their getting proved otherwise, his admission shall be cancelled besides any other action that may be taken against him under law for his/her civil or criminal liability.
- 7.3 In case the candidate is in employment or is self-employed or is engaged in business or profession, he/she shall also furnish the requisite certificate or undertaking, as the case may be, with the Application Form in accordance with clause 1.3.

8. DISTRIBUTION OF SEATS

- 8.1 (a) 75% of the sanctioned seats available in Non-Government Colleges of Education shall be filled from amongst eligible candidates who :-
- (i) are Graduates of the University of Jammu;
- OR (ii) belong to areas falling within the territorial jurisdiction of the University of Jammu but have passed the qualifying examination from a University other than the University of Jammu;
- OR (iii) are employees of the Central/State Govt./or Public Undertaking or any other Organisation recognised by the Syndicate are posted within the territorial jurisdiction of the University or sons, daughters, spouses of such employees. A certificate to this effect on **DO pad letter of the Head/ Commanding Officer** must be attached with the application form.

NOTE: Candidates applying under 8.1 (a) (iii) category must attach certificate and affidavit as per the specimen given at Annexure III & IV. Non-compliance shall lead to rejection of the candidature under the category and candidate shall be considered under 8.1(b) if otherwise eligible.

- OR (iv) Wards of Kashmiri migrants in other parts of the country are also eligible for B.Ed admission to Non-Govt. colleges affiliated to Jammu University for the academic session 2011-12 under Local category of the admission within the 75% of the sanctioned seats in order of merit provided such a candidate produces a documentary evidence of belonging to a family registered as Kashmiri Migrant.
- (b) Remaining 25% seats shall be filled from amongst eligible candidates who neither belong to the territorial jurisdiction of the University of Jammu nor have passed the qualifying examination from the University of Jammu.
- (c) In case, the number of eligible candidates is less than the number of seats available under (b) above, the unfilled seats may be filled from amongst the eligible candidates falling under (a) above and vice-versa.
- 8.2 (a) 67% of the seats available under clause 8.1 (a) in all the Non-Government affiliated Colleges of Education shall be filled from amongst eligible candidates belonging to open merit category strictly on the basis of merit i.e. %age of marks obtained in the qualifying examination.
- (b) 33% of the seats under reserved category shall be filled in accordance with Statute 10).
- (c) Seats available under clause 8.1 (b) shall also be filled from amongst eligible candidates on the basis of inter-se merit.

NOTE: The admission committee shall prepare a category-wise and merit-wise list of the candidates eligible under reserved categories. If a candidate falling under reserved category figures in the open category list, then he/she shall not be considered for admission under the reserved category and the candidate next in order of merit shall be given the benefit of reservation.

9. RESERVATION/DISCRETIONARY QUOTA

The norms and procedure relating to the admission of the students under Reserved Categories/Discretionary

quota will be the same as may be applicable in the case of teaching deptts of the University of Jammu for the session 2011-2012 and the benefit of it shall be available to the candidates holding certificate of being **permanent resident of the J&K State in the territorial jurisdiction of University of Jammu duly issued by the competent authority.**

- 9.1 8% seats shall be filled up by the Management of the respective colleges on their own out of the candidates who may or may not have applied to the university for seeking admission to the B.Ed Course for the session 2011-2012.

10. PROCEDURE AND MODE OF SELECTION

- 10.1 Admission of all eligible candidates to the B.Ed. Course shall be made by the Centralized Admission Committee constituted by the Vice-Chancellor.
- 10.2 Merit lists of eligible candidates mentioned in clause 8.1 (b) 8.2 (a) and those belonging to reserved categories shall be prepared separately on the basis of merit i.e. percentage of marks obtained in the qualifying examination. Admission of the candidates falling under clauses 8.1 (b) and 8.2 (a) shall be made on the basis of comparative merit in the respective lists. Likewise, admission of candidates under reserved categories shall be made on the basis of comparative merit in the respective reserved category.
- 10.3 (a) In case two or more candidates falling under open merit category or reserved category have equal merit, the inter-se order of priority for admission of such candidates shall be determined in the order formulated as under:-
- i) Candidate obtaining higher percentage of marks in Higher Secondary Part-II or an examination recognized as equivalent thereto;
 - ii) Candidate obtaining higher percentage of marks in the Matriculation examination or any other examination recognized as equivalent thereto, if percentage of marks at serial (i) is equal.
 - iii) Candidate older in age, if the percentage of marks at serial (ii) is also equal.
- 10.4 In case any seat in the reserved category falls vacant, the same will be filled from amongst candidates of that particular category, strictly in accordance with the prescribed procedure and norms. In the event of non-availability of eligible candidate in the concerned reserved category, the resultant vacancy shall be offered to the candidates specified in clause 8.2(a) (Open Merit) in order of merit. In the event of non-availability of a candidate mentioned in clause 8.2(a), the seat will be offered to the candidate mentioned in clause 8.1 (b) in order of merit.

NOTE: If a candidate who has applied under reserved category falls in the open merit, he/she shall not be considered under reserved category and candidate next to him/her shall be offered seat under reserved category.

11. ALLOTMENT OF COLLEGES

The admission will be made strictly on merit. The college shall be allotted to a candidate during the Counselling session by the Admission Committee on merit-cum-choice basis subject to availability of seat in that college.

12. DISPLAY OF LISTS OF SELECTED CANDIDATES

- 12.1 The list of candidates drawn strictly in order of merit for admission to B.Ed. Course shall be displayed on the Notice Board (s).
- 12.2 No separate intimation to individual candidates regarding selection shall be despatched. Batchwise counselling schedule in order of merit in the qualifying examination shall be notified in the Newspapers (Both Local & National papers and shall also be available on the University **website : www.jammuuniversity.in**).

13. ALL ADMISSIONS-PROVISIONAL

All admissions to the B.Ed. Course in the Non-Govt. colleges shall be provisional and subject to confirmation by the University.

NOTE:- The provisional admission, if granted to a candidate who has taken his/her last examination from the university other than the University of Jammu is liable to be cancelled if he/she does not submit his/her inter-university migration certificate issued by the concerned university alongwith the other requisite documents to the university through the college where admitted for the B.Ed course with the relevant Registration Return (R/R) within 30 days from the date of counselling.

14. VERIFICATION OF CERTIFICATES

All the candidates selected provisionally for admission to B.Ed. Course, shall submit all the original certificates/

documents at the time of Counselling/Admission for verification of their eligibility conditions failing which they shall forfeit the right of admission and no complaint shall be entertained in this regard. **The selected candidates except those belonging to Reserved Categories, shall also submit an Affidavit as per the specimen given at Annexure-II**, duly attested by a First Class Magistrate or a Notary, alongwith the original certificates/documents.

The candidates seeking admission under 8.1.(a) (iii) must attach certificate on the prescribed form (Annexure III) and an Affidavit (Annexure IV) otherwise their claim for admission to 8.1(a)(iii) clause shall not be considered.

15. APPEALS

15.1 In case the candidate, who had submitted his Application Form on due date, has any grievance and feels that the norms governing the admission have not been adhered to, he/she shall have the option to make an appeal to the Convenor, Admission Committee (B.Ed.) on the prescribed form on payment of Rs 100/- in the form of Demand Draft in favour of the Director Colleges Development payable at Jammu. The form duly filled in shall be submitted to the **Convenor (B.Ed. Admissions) within two days after the last date of admission during working hours**. Such appeals shall be considered by the Appellate Authority comprising the following:

- 1/ Vice-Chancellor (Chairman)
- 2/ Dean, Academic Affairs
- 3/ Registrar
- 4/ Director College Development (Convenor, B.Ed Admission Committee)
- 5/ Dean, Faculty of Behavioural Sciences
- 6/ Liason Officer Legal matters, Jammu University.
- 7/ One Principal of a Non-Government College of Education to be nominated by the Vice-Chancellor
- 8/ Officer dealing with the B.Ed Admissions.

Majority of the members shall form the quorum.

15.2 **It shall be obligatory on the part of the appellant to remain present on the scheduled date and time** at the venue of the meeting of the Appellate Authority. The candidate will ascertain the schedule time, date and venue of the meeting from the Convenor (B.Ed Admission). He/she shall appear before the Appellate Authority, if called upon to do so. The decision of the Appellate Authority shall be final and binding on the appellant.

16. REDRESSAL OF GRIEVANCES

In case of any grievance in the matter of interpretation of statutes or in dealing with a situation not envisaged in the statutes, the matter shall be referred to the Vice-Chancellor who shall issue such order as he may deem fit under the circumstances.

17. LEGAL DISPUTES

All legal disputes including consumer court relating to the admission of candidates to B.Ed. Course in Non-Govt. Colleges shall be subject to the jurisdiction of Courts in Jammu.

18. WITHDRAWAL OF ADMISSION

The candidates can apply for withdrawal of admission upto one day prior to close of admission. The fee after deducting Rs.600/- will be refunded by cheque drawn in the name of candidate after completion of admission process.

(IV) IMPORTANT INFORMATION FOR THE CANDIDATES

- (i) The admission to the B.Ed. regular course shall be made by the Centralized Admission Committee (B.Ed.) for the session 2011-2012.
- (ii) **No college or any other agency has been authorised to deal with the candidates for admission to the B.Ed. regular course in the Non-Government affiliated Colleges of Education except M.C. Khalsa college of Education which has been allowed to admit Sikh students (minority community) upto 50% of sanctioned seats.**
- (iii) Lists in order of merit of all the candidates covered under norms 8.1 (a) (i) (ii) (iii) and 8.1 (b), shall be displayed on the Notice Board (s) located around the Counselling Hall of the University of Jammu on the schedule day of their counselling.
- iv) If any document produced by a candidate is found to be fake at any stage, admission of such a candidate shall be cancelled.
- v) As all the selection lists will be provisional, therefore the selected candidates shall produce the original certificates/documents before the concerned officials in the Counselling Hall for verification of eligibility condition & merit. On getting clearance, the candidates shall deposit their Bank Drafts at the counter meant for the purpose and obtain the admission slip, specifying the college for which admitted.
- vi) In case candidates desirous of seeking admission come across any difficulty or are being harassed by any one on account of any reason, they are advised to bring this to the notice of the Convenor (B.Ed. Admissions).
- vii) The candidates admitted in each college are required to attend the classes regularly to earn eligibility (under statutes governing B.Ed. examination, candidates must have attended atleast 75% of the total lecturers delivered during the session) to appear in the University examination. They shall also follow the instructions issued by the college from time to time in respect of punctuality, regularity, participation in curricular and co-curricular activities, etc.

(V) COURSES OF STUDY FOR B.ED EXAMINATION FOR THE YEAR 2011-2012 :-

COMPULSORY PAPERS

- | | |
|-------------|---|
| Paper - I | Education in Emerging Indian Society |
| Paper - II | Psychology of Teaching Learning Process |
| Paper - III | School Management and Pedagogics of Education |
| Paper - IV | Development of Educational System in India. |

OPTIONALS

- | | |
|-----------|--|
| Paper - V | Any one of the following specializations : |
| a) | Essentials of Educational Technology |
| b) | Information and Communication Technology |
| c) | Guidance and Counselling |
| d) | Educational Measurement and Evaluation |
| e) | Comparative Education |
| f) | Educational Administration |
| g) | Health and Physical Education |
| h) | Environmental Education |
| i) | Home Science |
| j) | Indian Music |
| k) | Work Experience |

TEACHING SUBJECTS

Paper VI and VII : Content-cum-Methodology of teaching in any two school subjects only from any of the following groups :

- Group I Teaching of English/Hindi/Urdu/Punjabi
- Group II Teaching of Social Studies (History/Civics/Economics/Geography)
- Group III Teaching of General Science (Physics, Chemistry & Biology)
- Group IV Teaching of Mathematics

The students shall have to opt any two subjects selecting not more than one from each of the groups mentioned above.

The syllabus for the session 2011-2012 is under revision.

VI. SCHEDULE OF EXAMINATION

The annual examination for the Degree of Bachelor of Education shall be held in July/August or any other date prescribed by the University at Jammu and such other places as may be fixed by the Vice-Chancellor.

-----X-----

1. FEES* PAYABLE AT UNIVERSITY BY THE CANDIDATE AT THE TIME OF COUNSELLING

A candidate admitted to the B.Ed course shall pay **Rs.24,920/- (Twenty four thousand, Nine hundred & twenty only)** through Bank Draft issued by a Nationalised or Scheduled Bank payable at R.C.C. Jammu in favour of **Director Colleges Development, University of Jammu** at the time of counselling, for the entire duration of the course which includes **Rs.2000/- as Infrastructure fund of the University Rs.575/- as Examination Development Fund Rs.170/- as Digitalization Fund and Rs.100/- as Internal Quality Assurance Cell Fund.**

2. FEES* PAYABLE AT COLLEGE WHERE TO BE ADMITTED AS UNDER:

- i) Examination fees Rs 490/- (Full subjects) & Rs. 20/- maintenance charge+ Rs. 25/- Desk fee
- ii) Sports Fee Rs. 45/-
- iii) NSS Fees Rs. 50/- (Rs.20/- shall be deposited in the office of the Programme Coordinator, NSS, University of Jammu and Rs.30/- will be retained by the college for the conduct of NSS activities.
- iv) Registration Fee Rs.155/-
- v) Eligibility Fees Rs.320/- (Only for those who took their last examination from the University other than the University of Jammu)
- vi) Development Fund Rs.1500/-
- vii) Annual maintenance charges Rs.1000/-
- viii) Library Security Rs.500/- (Refundable)
- ix) Information Brochure of the college Rs.500/-
- x) Cultural fee:- Rs.50/-
- xi) College Magazine Rs.50/-

The charges prescribed for the hostel facilities for all the colleges for the session 2011-2012 shall be:

- i) Hostel Rent - **For Hostel within campus :**
Not exceeding Rs.7000/- for the entire duration inclusive of 24 hrs. electricity, water provision and other maintenance charges to be realized in three installments.

- **For Hostel outside campus :**
Not exceeding Rs.6000/- for the entire duration inclusive of 24 hrs. electricity, water provision and other maintenance charges to be realized in three installments.
- ii) Mess charges - Upto maximum of Rs.15000/- for the entire duration to be realized in three installments.

The menu of the food to be served to the boarder shall not be lower in quality than that of the University hostel.
- iii) Hostel Security - Rs. 500/- (Refundable)
- iv) Uniform - Uniform shall be mandatory as per the colour prescribed by the respective colleges. The students shall have option to purchase the uniform on their own. Cash receipt has to be

***The fee is under revision by the Fee Fixation Committee constituted by the State Government. However, the fee as on the first day of counselling shall remain valid for the current academic session.**

FOR RESERVE CATEGORY ONLY

(On non judicial stamp paper worth Rs.5, duly attested by Magistrate/Notary)

ANNEXURE—I

(Statute 8.2)

A F F I D A V I T

I, _____

Son/daughter of _____

R/O _____ do hereby solemnly affirm and declare that —

- (i) I am seeking admission to the B.Ed. regular course in a Non-Government College of Education affiliated with the University of Jammu on the basis of Reserved Category.
- (ii) Photocopies of the Reserved Category Certificate, qualification certificates and other documents signed by me and attested by the attesting authority and attached with the Application Form are genuine.
- (iii) The category certificate is issued by the competent authority on the approved form and conforms to the latest SRO/order issued by the J&K Govt.
- (iv) I have not already availed of this concession for admission to any course in the teaching departments of the University.
- (v) In the event of my above averments having been proved otherwise, my admission shall stand automatically cancelled. Besides I shall be liable to any other action that may be taken against me under law.

I, further affirm and declare that the averments made above are correct and true to the best of my knowledge and belief and nothing has been concealed or suppressed.

DEPONENT

FOR ALL CANDIDATES

(On non judicial stamp paper worth Rs.5, duly attested by Magistrate/Notary)

ANNEXURE — II

A F F I D A V I T

I, _____

Son/daughter of _____

R/O _____ do hereby solemnly affirm and declare that —

- i) I have passed my degree examination in the year _____ from the University of _____.
- (ii) the certificates and documents submitted by me on the basis of which I claim admission are genuine.
- (iii) I shall not pursue any other course or appear in any other examination during my admission to the B.Ed course other than as specified in 1.2 of the norms.

In the event of my above statement having been proved otherwise my admission shall stand automatically cancelled. Besides I shall be liable to any other action that may be taken against me under law.

I, further affirm and declare that the averments made above are true to the best of my knowledge and belief and nothing has been concealed or suppressed.

DEPONENT

FOR CANDIDATES APPLYING UNDER 9.1 a (iii) ONLY

ANNEXURE—III
{Statute 9.1a(iii)}

CERTIFICATE

(Duly issued by the Commanding Officer/Officer Commanding/Employer/Head of the Divisional office of the concerned organisation in Jammu Division)

Certified that Mr./Ms. _____ S/o,
D/o, Sh. _____ **(Name of the Employee)** holding the post of _____
_____ is a regular employee of this department/organisation of the Central/
State Govt./Govt. Undertaking. Presently he/she is posted at _____
since _____ vide order no. _____ dt. _____ which falls within the
jurisdiction of Jammu Division of the J&K State. His/Her posting in the said office is not a temporary arrangement
or short term attachment.

The relation of the employee with the candidate namely _____ is _____.

(Complete Address of the issuing
department for correspondance)

Signature
(Name _____)
(SEAL WITH CLEAR IMPRESSION)

FOR CANDIDATES APPLYING UNDER 9.1 a(iii) ONLY

(On non judicial stamp paper worth Rs.5, duly attested by Magistrate/Notary)

ANNEXURE — IV

(Statute 9.1 a iii)

A F F I D A V I T

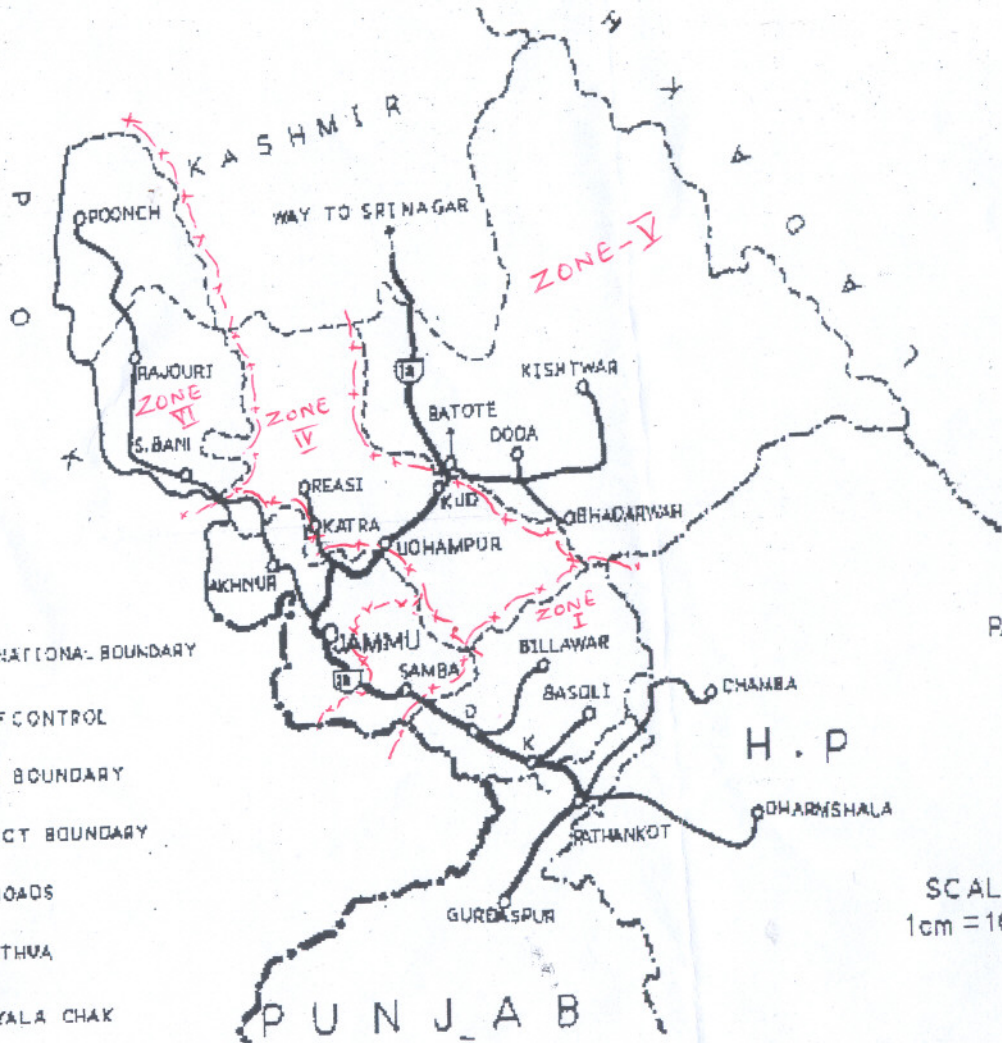
I _____ S/o, D/o
Sh. _____ do hereby solemnly declare that I am a permanent employee of the
Department of _____ of the Central Govt./Govt. Undertaking and at present working
as _____ at _____ since _____ in pursuance of order
No _____ (name of the office and location where posted in Jammu Division) dated
_____ of deptt./org. My posting in the Jammu division of the J&K State is not a temporary
arrangement or short term attachment.

I, further solemnly declare that the particulars entered in the Certificates submitted by me/my son/ my
daughter/my spouse under clause 9.1 a(iii) Annexure III, duly issued by my Commanding Officer/Employer/Head
of the Divisional Office of the Department/organisation, in Jammu Division are correct and true to the best of my
knowledge. In case, the above statement is found false at any stage, the admission granted to the B.Ed course
in my favour/in favour of my Son/Daughter/Spouse namely _____ shall stand cancelled automatically and I
shall be liable to be punished under law. My relation with the said candidate is _____.

DEPONENT

JAMMU PROVINCE

ROAD MAP



DISTANCE IN KMS.

| | |
|-----|-----------|
| 28 | AKHNOR |
| 77 | S. BANI |
| 155 | RAJOURI |
| 245 | POONCH |
| 45 | KATRA |
| 75 | REASI |
| 85 | UDHAMPUR |
| 81 | KUD |
| 119 | BATOTE |
| 166 | DOOA |
| 200 | BHADARWAH |
| 232 | KISHTWAR |
| 53 | SAMBA |
| 87 | KATHUA |
| 120 | BILLAWAR |
| 160 | BASOLI |

PATHANKOT 107Kms JAMMU

SCALE
1cm = 16Kms

LEGENDS

- INTERNATIONAL BOUNDARY
- LINE OF CONTROL
- STATE BOUNDARY
- DISTRICT BOUNDARY
- ROADS

K: KATHUA

D: DIYALA CHAK

ZONE Boundary